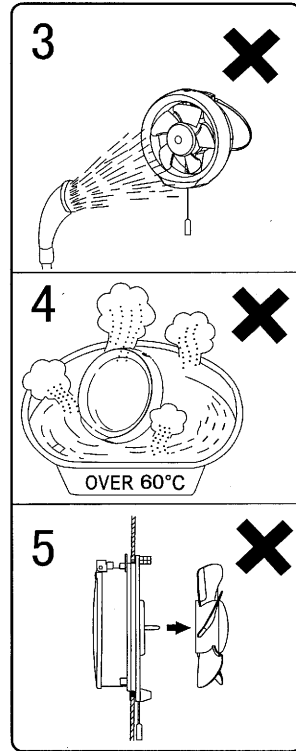


MAINTENANCE PRECAUTIONS

保養方法

- ⊘ 3. Do not allow water to contact electrical part such as motor.
 - ⊘ 4. Do not immerse resin parts in hot water over 60°C.
 - ⊘ 5. Do not take out the blade for cleaning.
 - ❗ 6. If the supply cord is damaged, it must be replaced by the manufacturer or its service agent or a similarly qualified person in order to avoid a hazard.
 - 7. Wear plastic gloves during cleaning to avoid accidents.
-
- ⊘ 3. 馬達等電氣部件絕對不能被水接觸。
 - ⊘ 4. 塑膠部件不能用高於60°C的熱水浸洗。
 - ⊘ 5. 請不要拆除扇葉進行清潔。
 - ❗ 6. 如果電源線損壞, 為避免危險, 必須由製造廠或其維修部或類似的專職人員來更換。
 - 7. 為避免意外發生, 清潔時請戴上膠手套。



SPECIFICATIONS

規格

Model 型號	Voltage 電壓 [V]	Frequency 頻率 [Hz]	Power consumption 耗電量 [W]	Air delivery 排氣量 [m ³ /min]	Power factor 功率因數 [%]	Noise 噪音 [dB]	Net weight 淨重 [kg]
FV-15WU4 07	220	50	7.7	3.5	95	34	0.9
FV-20WU4 07	220	50	16	6.3	99	34	1.1

*Air direction: Exhaust
IP code: IPX4(outside)
Insulation class E

*氣流方向: 排氣
IP號碼: IPX4(戶外部分)
E級絕緣

Matsushita Electric Industrial Co., Ltd.

Web Site: <http://www.panasonic.co.jp/global>

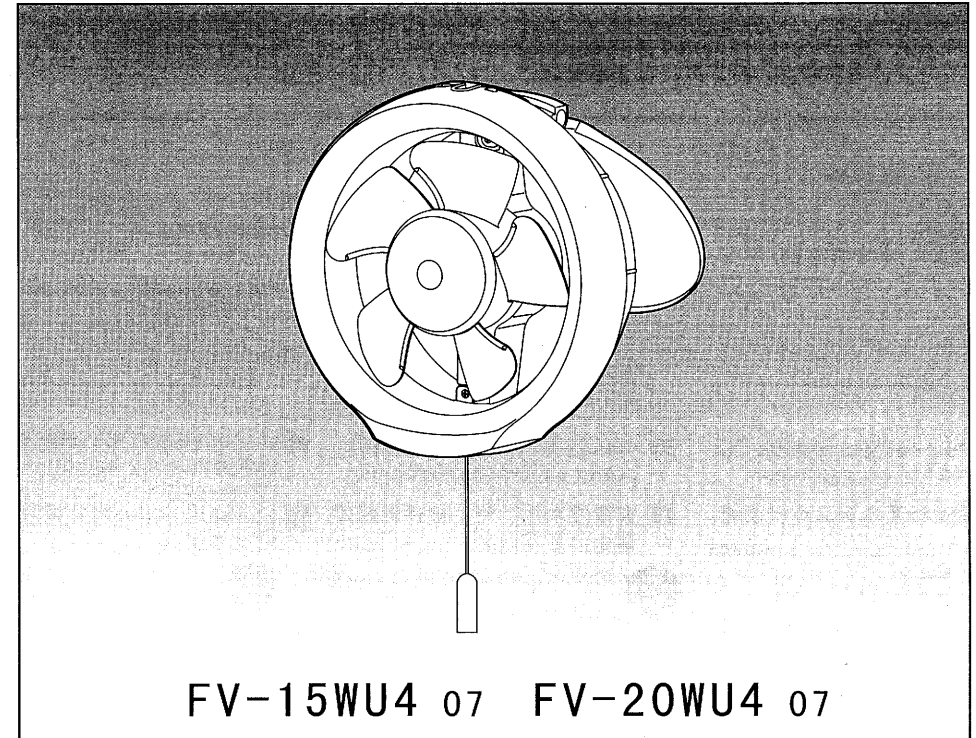
Panasonic

Ventilating Fan

換氣扇

Operating Instructions

操作說明書



Before operating this product, please read the instructions completely.

在使用本機之前, 請仔細閱讀本操作說明書

SAFETY INSTRUCTIONS 安全指引

Please Observe strictly
請嚴格遵守

OPERATION 操作方法


The following explanations must always be observed in order to prevent harm to users or other people and prevent damage to property.


為了防止危害或損傷到使用人和其他人的人身與財產，就安全方面需務必遵守的事項作如下說明。

- The following displays are classified and explained to what extent harm or damage occurs when the display details are ignored and the unit in question is wrongly used.
- 對無視此表示的內容，錯誤使用時，會引起的危害或損傷的程度，用下列符號進行分類說明。

Warning 警告 This indication means: Must be treated seriously that this may result in death or serious injury.
此標記表示：有可能導致死亡或嚴重傷害，必須認真對待。

- The types of details to be observed are classified and explained in the following illustrated display. (Below are the series of illustrated displays)
- 對希望遵守的內容，用下列符號分類說明。

 This type of pictorial symbol indicates a "Prohibited" action that must be avoided.
這樣的符號，指的是“禁止”做的內容。

 This type of pictorial symbol indicates a "Compulsory" action that must be performed.
這樣的符號，指的是必須“強制”實行的內容。

Warning 警告

- Must not disassemble the unit for reconstruction.
- 禁止拆開本產品進行改造。
- It may cause fire or electric shock
容易導致火災、觸電
- Repairing should be serviced by authorized service centre.
修理時必須到指定的維修店進行修理
- Make sure to disconnect the power supply when cleaning.
- 在清潔本產品時，確保電源開關處於斷開狀態。
- It may cause electric shock
可能會觸電
- Use this fan at the rated voltage and frequency indicated on the name plate.
- 按照銘牌標定的額定電壓及頻率使用本產品。

220V~
50Hz

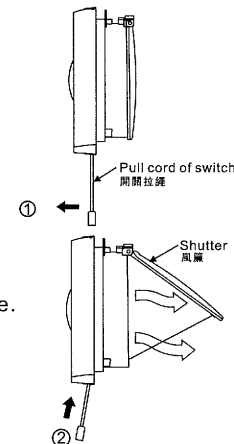


Turn on the fan 開啓

- ① Pull the pull cord of switch outward to release the knot from fan.
向外拉開開拉繩，使繩結脫離卡口位。

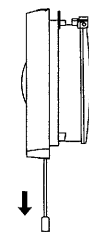
- ② Release the pull cord of switch slowly to open the shutter, power supply will be connected and the fan will operate in the meantime.

緩慢釋放拉繩，使風簾打開，此時電源接通換氣扇運轉。



Turn off the fan 關閉

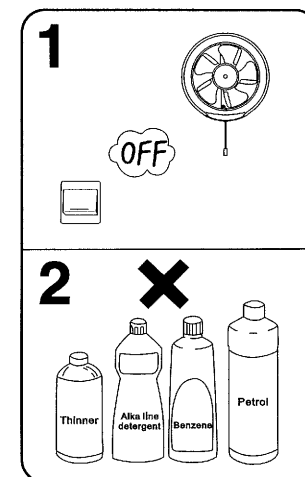
Pull the pull cord of switch downward to lock the knot at the fan, the power supply will be disconnected and the fan will stop in the meantime.
向下拉開開拉繩，使繩結置於卡口位，此時電源切斷，換氣扇停止運轉。



MAINTENANCE PRECAUTIONS 保養方法

- ❗ 1. Disconnect the power supply until blade is completely stopped before clean and maintenance.
- ⊘ 2. Never use petrol, benzene, thinner or any other such chemicals for cleaning the ventilating fan.

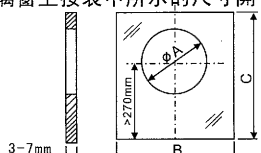
- ❗ 1. 在清洗保養前請確保斷開電源且扇葉停止轉動。
- ⊘ 2. 千萬不要用汽油、苯、溶劑或任何類似的化學物清洗本換氣扇。



HOW TO INSTALL

安裝方法

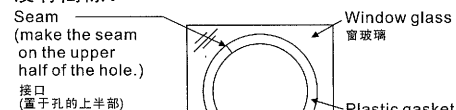
1. Make an installation hole on the window glass according to the dimensions showed in the table.
在玻璃窗上按表中所示的尺寸開一個安裝孔。



Model 型號	A	B	C
FV-15WU4 07 FV-15WU4 08	186-188mm	≥250mm	≥400mm
FV-20WU4 07 FV-20WU4 08	247-250mm	≥300mm	≥420mm

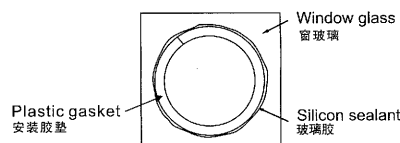
2. Mount the supplied plastic gasket so that the seam is on the upper half (either left side or right side) of the hole, never positioned on the vertical center part. Adjust the length so that there is no gap at the joint.

把安裝膠墊固定，請務必把接口固定在孔的左上端或右上端，不要把接口固定在中央位置，請調整安裝膠墊的長度確定其接口之間沒有間隙。



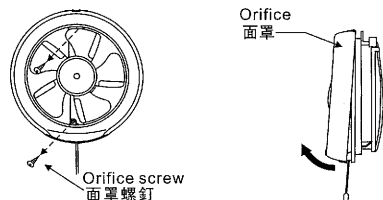
3. please seal the gap between glass and gasket by silicon sealant to ensure the airtightness.

然後用玻璃膠填滿玻璃與安裝膠墊之間間隙，以確保其密封性。



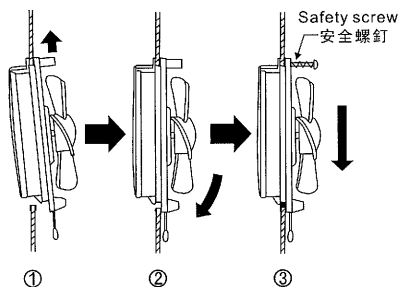
4. Loose 2 pieces of orifice screw and remove the orifice.

鬆開換氣扇兩顆面罩螺釘，取下面罩。



5. When installing the fan, fix top of the fan at the window glass (figure ①), and press the bottom of the fan into the hole (figure ②), then push the fan in the hole downward, and tighten the safety screw afterwards (figure ③).

在安裝換氣扇時，先把換氣扇頂部固定在窗玻璃上(圖①)再把換氣扇的下部壓入孔中(圖②)，然後把換氣扇向下壓。安裝好後擰緊安全螺釘(圖③)。

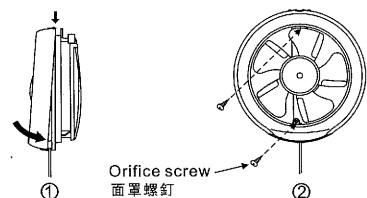


6. Set the orifice (figure ①) and secure 2 pieces of orifice screw (figure ②).

❗ Do not operate this ventilating fan before setting the orifice.

把面罩安裝好(圖①)，擰緊兩顆面罩螺釘(圖②)。

❗ 在面罩沒有安裝好之前不可以運轉本產品。



Ventilating Fan

換氣扇

Installation Instructions

安裝說明書

Model FV-15WU4 07 FV-15WU4 08

型號 FV-20WU4 07 FV-20WU4 08

This instruction is only for the guide of installation

本說明書僅供安裝使用

Please read the instructions completely before installation and construct according to the directions strictly.

安裝前請仔細閱讀本說明書，務必切實按照說明書施工。

SAFETY INSTRUCTIONS

Please Observe strictly
請嚴格遵守

安全指引

The following explanations must always be observed in order to prevent harm to users or other people and prevent damage to property.

為了防止危害或損傷到使用人和其他人的人身與財產，就安全方面需務必遵守的事項作如下說明。

- The following displays are classified and explained to what extent harm or damage occurs when the display details are ignored and the unit in question is wrongly used.
- 對無視此表示的內容，錯誤使用時，會引起的危害或損傷的程度，用下列符號進行分類說明。

	Warning 警告	This indication means: Must be treated seriously that this may result in death or serious injury. 此標記表示：有可能導致死亡或嚴重傷害，必須認真對待。
	Caution 注意	This indication means: must be treated seriously that this may result in injury or physical damage. 此標記表示：有可能導致人身傷害或設施損毀，必須認真對待。

- The types of details to be observed are classified and explained in the following illustrated display. (Below are the series of illustrated displays)
- 對希望遵守的內容，用下列符號分類說明。

	This type of pictorial symbol indicates a "Prohibited" action that must be avoided. 這樣的符號，指的是“禁止”做的內容。
	This type of pictorial symbol indicates a "Compulsory" action that must be performed. 這樣的符號，指的是必須“強制”實行的內容。

INSTALLATION CAUTIONS

裝配注意事項

Warning 警告

- The unit should be grounded
- 本產品必須接地
- Use this fan at the rated voltage and frequency indicated on the name plate.
- 按照銘牌標定的額定電壓及頻率使用本產品。
- Must not disassemble the unit for reconstruction.
- 禁止拆開本產品進行改造。
- It may cause fire or electric shock
- 容易導致火災、觸電



Earth
接地

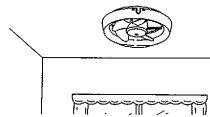
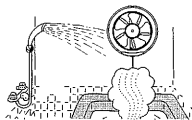


220V~
50Hz

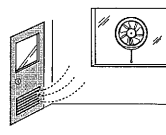
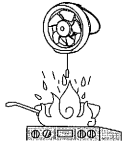


Caution 注意

- Do not install this fan where it could be directly exposed to water or excess vapor.
- 不要把換氣扇安裝在容易被水噴到或煙霧、水氣過多的地方。
- Do not install this fan in the ceiling.
- 不要把本換氣扇裝在天花板上。



- Do not install this fan over cooking equipment.
- 不要把本換氣扇裝在烹調設備上方。
- Be sure to provide an appropriate opening for air intake.
- 安裝場所必須設置有通風口。



- This fan can be mounted in outside faced window from inside of room.
- 此換氣扇可以從室內安裝在窗戶上。



- This ventilating fan should be mounted above 2.3m from the floor.
- 此換氣扇的安裝高度距地面勿低於2.3米。



- For this fan, precautions must be taken to avoid the back-flow of gases to the room from the open-flue of gas or other fuel-burning appliances.
- 在安裝換氣扇時，請採取適當的措施以防止氣體從一般的排氣管或炊具排氣管倒流回室內。



- Use a device for disconnection from the supply, having a contact separation of at least 3mm in all poles.

- 安裝時，需在供電線路中安裝其觸點開距不少於3mm的雙極斷開裝置。



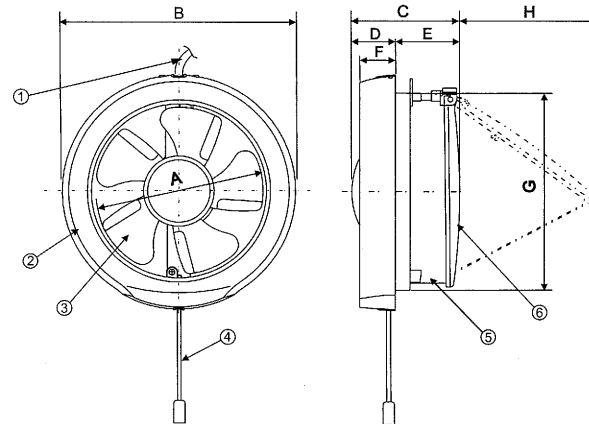
- This fan must be installed by a qualified technician.
- 此換氣扇必須由專職人員來進行安裝。

NAME AND DIMENSIONS OF EACH PART

各部分的名稱及尺寸

IDENTIFICATION OF PARTS; MEASUREMENTS

部件名稱及尺寸



1	Power cord	電源線
2	Orifice	面罩
3	Blade assembly	扇葉組合
4	Pull cord of switch	開關拉繩
5	Body	機身
6	Shutter	風簾

Units:mm
尺寸單位:毫米

Model 型號	A	B	C	D	E	F	G	H
FV-15WU4 07 FV-15WU4 08	∅ 150	∅ 210	97	43	54	37.4	177	149
FV-20WU4 07 FV-20WU4 08	∅ 200	∅ 271	98	36	62	36	237	201

Wiring Diagram

電氣原理圖

